

Figure 8

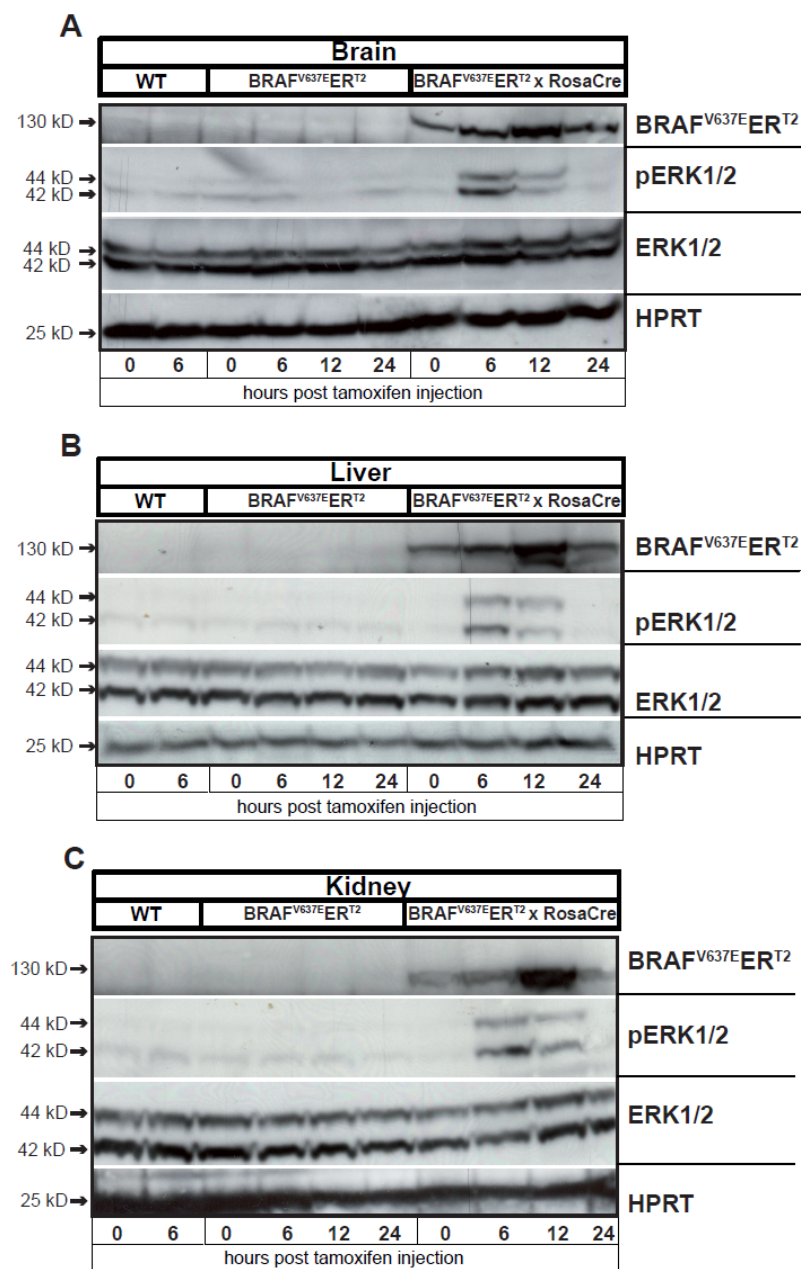


Fig. 8. pERK 1/2 levels after tamoxifen administration at different time points.

pERK1/2 levels were detected by western blotting at different time points (0, 6, 12 or 24 hours) after one single tamoxifen dose in Brain (A), Liver (B) and Kidney (C). Neither WT (B-RAF^{V637E}ER^{T2} ^{-/-} Cre^{-/-}) nor Rosa-Cre^{-/-} (B-RAF^{V637E}ER^{T2} ^{+/-} Cre^{-/-}) mice showed induction. Rosa-Cre^{+/-} (B-RAF^{V637E}ER^{T2} ^{+/-} Cre^{+/-}) was the unique group which modified its pERK1/2 levels upon tamoxifen induction. The one peak of induction was found 6 hours post-treatment, returning to normal levels 24 hours later.